

## Complete Solutions

Descon brings the science of case transport into the 21<sup>st</sup> century by utilizing the latest advancements in modular belting.

## Advantages

- Solid surface transport and positive and oriented flow
- Measured and accountable case location throughout the entire system
- Ensures maximum package integrity whether running corrugated cartons, shrink wrapped trays, or unsupported film bundles
- Variable speed motor control provides recipe set-up for varying product formats
- Maintenance friendly design and readily available components

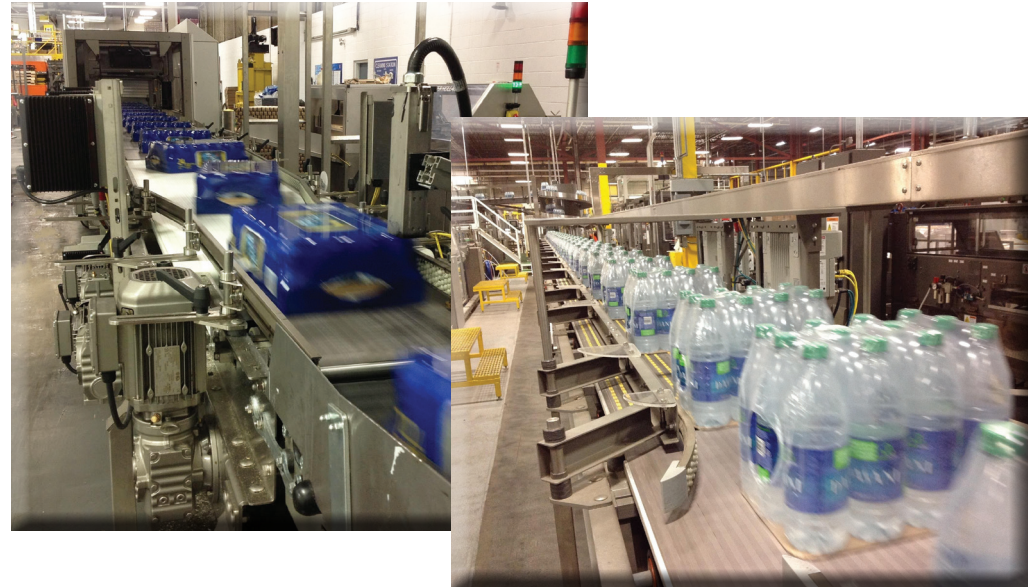


# Conveyor – Full Case / Pack

## General Features

Descon modular case conveyors are designed for strength, rigidity, and performance.

- 11 gauge formed side frames
- Bolt together modular design
- UHMW carryway, Thermoplastic roller return way
- Welded tubular supports with plastic articulating base pads
- Flange-mounted hollow shaft gear reducers
- Variety of standard side guides to suit case format
- Nose-over type transfers for sensitive pack handling
- Transfers are integrated internal to conveyor frames ensuring proper set-up at factory



## Available Options

Descon provides many options to enhance efficiency and productivity and ensure safety.

- Programmable automatic case guides using DC linear actuators
- Stainless steel or powder coated carbon steel
- Pre-mounted motor isolation switches
- Integrated wire way systems
- Integrated high side walls for broken case containment
- Automatic case diversion gates
- Dust covers and pans

## Other Related Products

Descon complementary equipment includes, but not limited to the following:

- Case turner with “turn or no-turn” programmable capability
- Case accumulation system with near zero back-pressure
- Case metering
- Servo case merging and diverting systems
- Vertical case elevating/lowering
- Integrated vertical pivoting slides
- Case rejector units